



ENTERPRISE ZONES



Co-locate with your customers

The easiest way to grow your business, increase your sales and reduce distribution costs. Enterprise Zones are establishing themselves as the driving force of local economies as they unlock key development sites, consolidate infrastructure, attract business and create jobs.

A straightforward planning process

Need a new building to meet your business needs?
Simplified planning rules could save you time and money.

Simplified planning through Local Development Orders that grant planning permission for certain development (such as new industrial buildings or changing how existing buildings are used) within specified areas.

Business-ready infrastructure

Superfast broadband, easy access to transport links, and a local highly skilled labour pool.

What benefits does the Enterprise Zone offer?

Businesses that locate on the Enterprise Zone can access a number of benefits:

- Samlesbury Aerospace Enterprise Zone benefits from a Masterplan and Local Development orders to simplify the planning process.
- Superfast - Broadband will be available on site.



CGI Aerial for illustrative purposes



SECONDARY
ENTRANCE TO
ENTERPRISE ZONE

BAE Systems
Academy for Skills
& Knowledge



**SAMLESBURY AEROSPACE
ENTERPRISE ZONE
LANCASHIRE**

PART OF THE LANCASHIRE ADVANCED
MANUFACTURING & ENERGY CLUSTER

→
BLACKBURN
(12 MINS)

A677

MAIN
ENTRANCE TO
ENTERPRISE ZONE

M6 (5 MINS)
JUNCTION 31
AND PRESTON
(14 MINS)



BAE SYSTEMS

M6 (5 MINS)
JUNCTION 31
AND PRESTON
(14 MINS)



ATTRACTING INWARD INVESTMENT

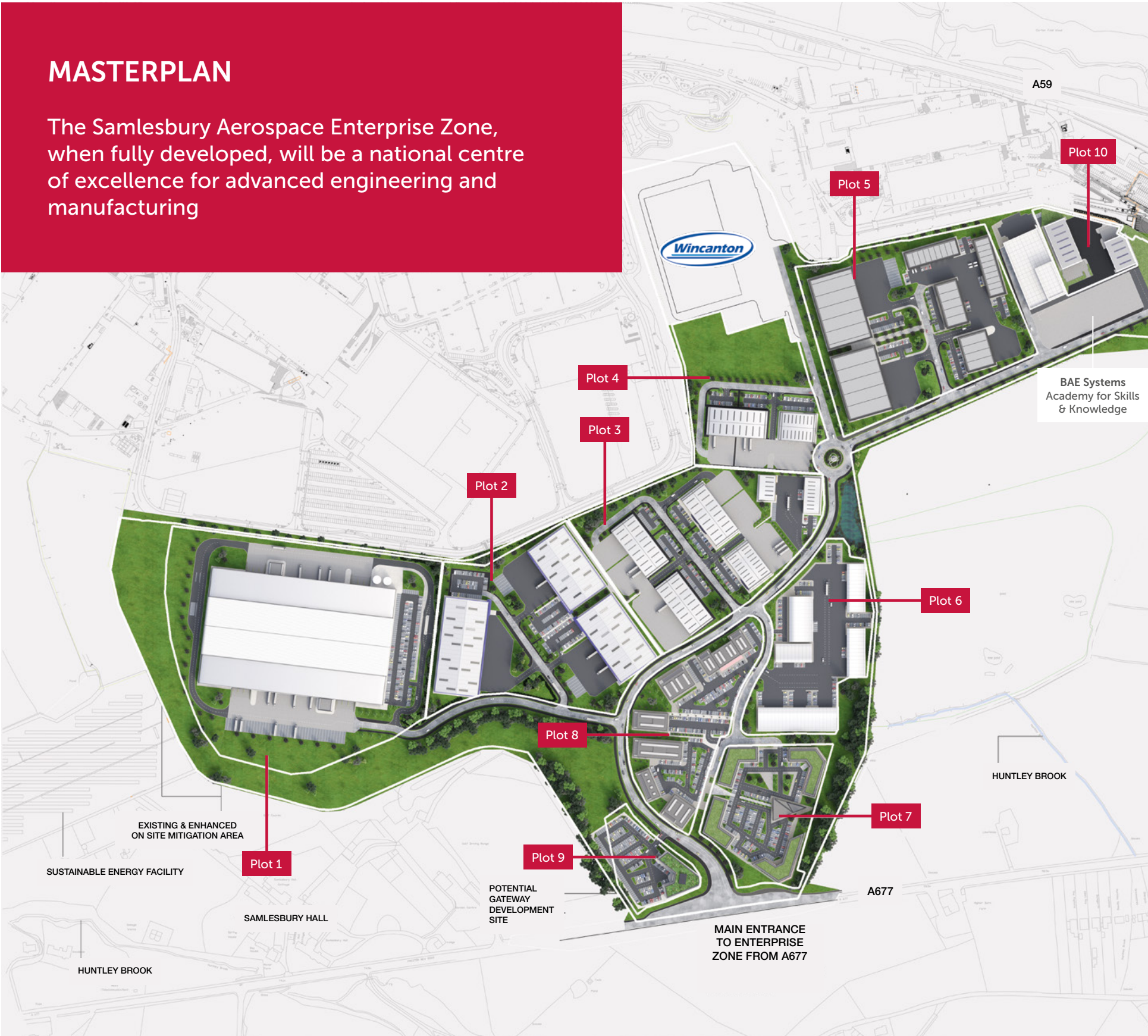
Nationally, Enterprise Zones are helping to attract more investment into the country, bringing jobs and businesses, delivering long-term, sustainable growth based on cutting-edge technology and enterprise.

Businesses are clustering around centres of excellence in key sectors including here at Samlesbury, part of the Lancashire Advanced Engineering and Energy Cluster (LAMEC).

Since 2012 enterprise zones have attracted over £2.4 billion pounds of private sector investment, building world class business facilities and transport links and have attracted nearly 24,000 jobs.

MASTERPLAN

The Samlesbury Aerospace Enterprise Zone, when fully developed, will be a national centre of excellence for advanced engineering and manufacturing





THE OPPORTUNITIES & AVAILABILITY

■

The Samlesbury Aerospace Enterprise Zone offers flexible opportunities for a range of unit sizes (B1, B2, B8 in the Advanced Engineering & Manufacturing sector) to meet the needs of business from small offices, research laboratories to large industrial units. The commercial development framework in place for the site represents indicative plot layouts and capacity.

In total the site provides 50 hectares (circa 120 acres) of development land capable of accommodating up to 1 million sq ft of various uses within the advanced manufacturing sector, in a broad range of unit types and sizes, varying between 2,500 sq ft up to circa 350,000 sq ft.

“ A strong focus on advanced engineering and manufacturing sector providing world-class development opportunities ”

A new access road has been completed with development plots available for:

Hi-Tech Manufacturing / Industrial / Distribution

Samlesbury can also provide a varied size range of new build properties tailored to the requirements of companies in the manufacturing/production, research and development, high technology, specialist logistics and professional support services sectors.

Research & Development

The site will have access to world class research and development capabilities to support the continued growth of the sector.

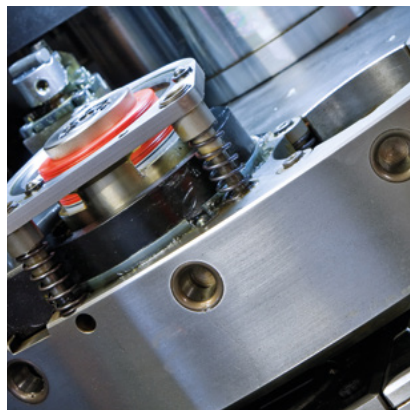
Headquarter offices

The site can also accommodate HQ offices, offering a world class environment within a cluster of globally branded business enterprises.

A diverse range of options are available, where bespoke development can deliver different uses whether taken separately or combined together in a single facility.

A full and active design and technical team is in place alongside commercial property agents to work with occupiers to provide property solutions tailored to specific requirements.

Buildings are available to occupy by way of freehold or leasehold interest. Terms and deliverability will be tailored to suit occupational requirements.



SAMLESBURY AEROSPACE ENTERPRISE ZONE

Samlesbury is so much more than just a business park, it is a once in a generation opportunity to be part of a truly world class, leading edge collaborative environment.

It is a new, high-quality development providing business units from 2,500 sq ft to 350,000 sq ft on the UK's newest Advanced Engineering & Manufacturing Park immediately adjacent to BAE Systems, one of the world's most advanced, technology-led defence, aerospace and security solutions companies.

Located in the heart of the largest cluster of aerospace production in the UK, with over 13,000 employees, it is part of a wider world class regional cluster accounting for more than a quarter of national production. Major employers in Lancashire also include Rolls Royce, Aircelle, Kaman, Senior, RLC and Magellan.

When fully developed, the Samlesbury Aerospace Enterprise Zone will be a national centre of excellence for advanced engineering and manufacturing related companies in B1, B2 and B8 units ranging from manufacturing, specialist logistics and professional support services.

Focusing on new and emerging market opportunities, Samlesbury will be a leading centre for world-class research businesses and supply chain manufacturers; developing cutting edge technologies and advanced manufacturing processes.

- Hi-tech engineering & manufacturing
- Research & development
- High quality offices





BAE Systems
Academy for Skills
& Knowledge



MAIN
ENTRANCE TO
ENTERPRISE ZONE



BLACKBURN
(12 MINS)

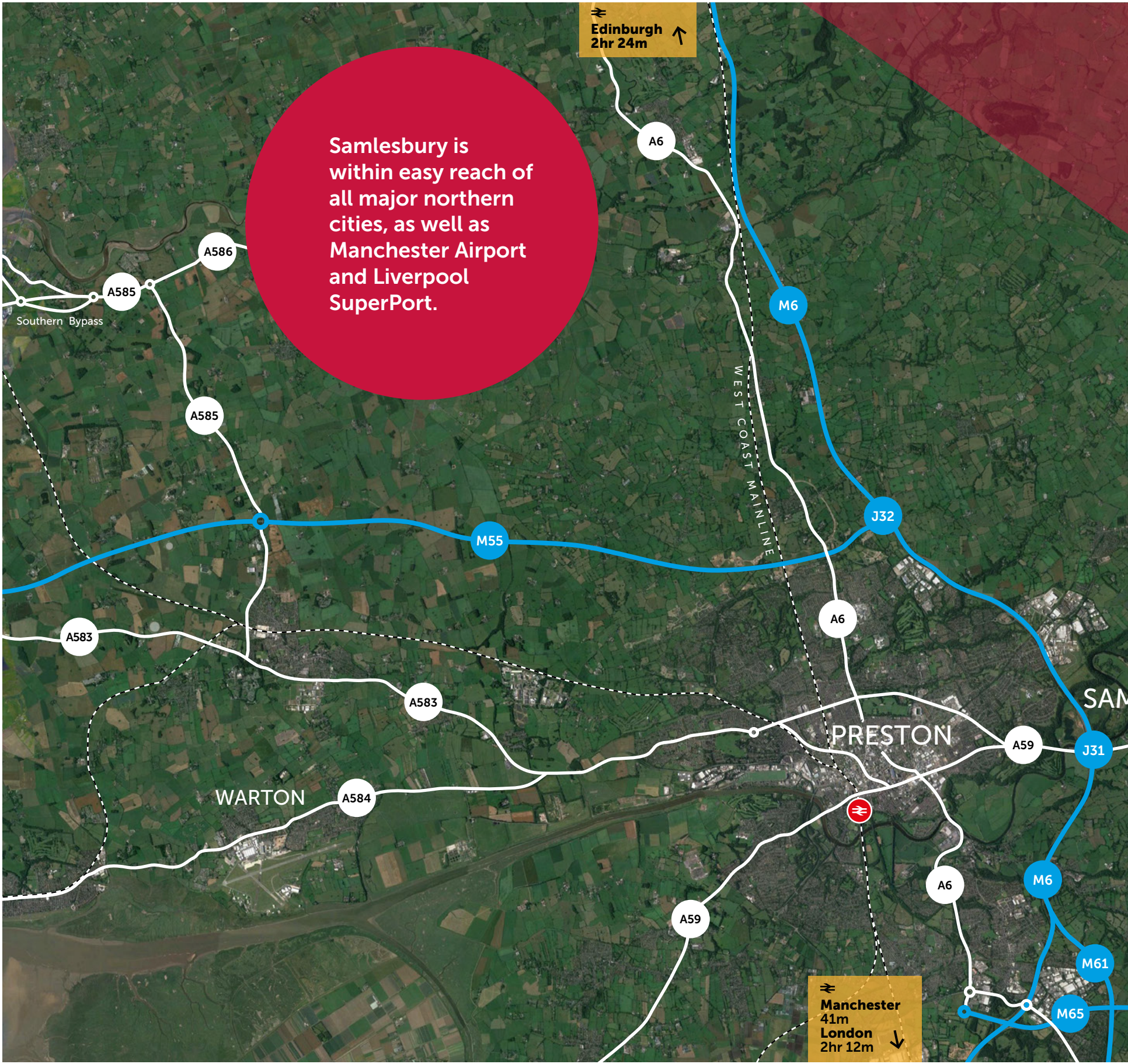
A677

M6 (5 MINS)
JUNCTION 31
AND PRESTON
(14 MINS)



BAE SYSTEMS

Wincanton





LOCATION



Lancashire - nationally and globally connected

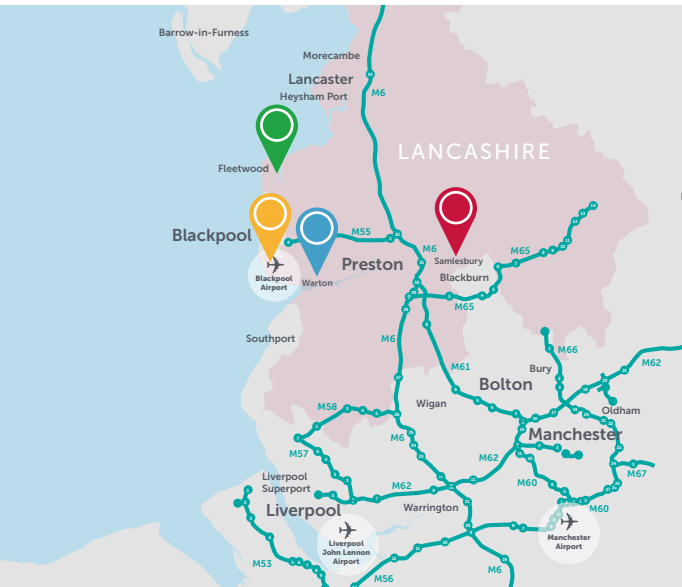
The county's transport connectivity is first class, with the M6 forming the north-south spine of the road network while the M65, M55, M61 and M58 radiate out to East Lancashire, the Fylde Coast, Greater Manchester, Merseyside and beyond.

Rail links are equally efficient, with the West Coast Main Line placing many areas of Lancashire are just over a two-hour train journey of London.

Samlesbury Aerospace Enterprise Zone

With its excellent motorway, rail and air links, Samlesbury Aerospace Enterprise Zone is an excellent location from which to access national and international markets, Samlesbury is within easy reach of all major northern cities, as well as Manchester Airport and Liverpool SuperPort.

The 50 hectare site at Samlesbury is set in rolling countryside to the east of Preston in proximity to the M6, between the A677 and A59, next to the existing operational site of BAE Systems' Military Air and Information division.





WORKING IN CLOSE PARTNERSHIP



Partnering with academic and industrial leaders we develop new technologies to support our future product strategies.

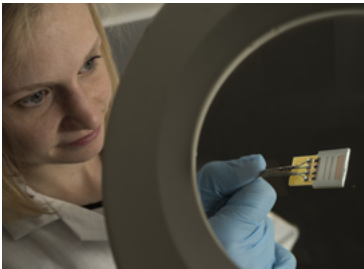
BAE Systems is a global defence, aerospace and security company employing around 82,500 people worldwide.

Our Military Air & Information business is based predominantly in the North of England and is the hub of our expertise in the design, manufacture and assembly of military combat aircraft and military training aircraft, as well as providing training, support and information services for our global customers.

We have a long history of being experts in the development, delivery and support of military aircraft and currently work on world-leading aircraft including the Eurofighter Typhoon, F-35 Lightning II.

Our people are dedicated to help safeguard and enhance our customers’ military capabilities.

www.baesystems.com





SUPPLY CHAIN



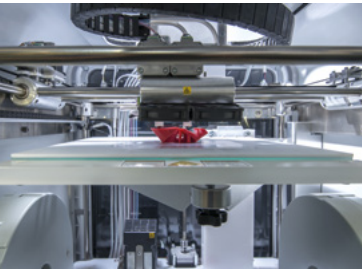
Lancashire is home to the UK’s single largest aerospace cluster and is also one of the UK’s key locations for advanced manufacturing and the 9th largest globally. The areas hosts 500 aerospace supply chain companies.

An ideal location for the aerospace and advanced manufacturing supply chain Samlesbury Aerospace Enterprise Zone provides businesses with the opportunity to innovate whilst also benefitting from superb infrastructure and the development of purpose-built premises alongside BAE Systems’ world class facilities. Companies can also access a highly skilled local workforce and an exceptionally capable local supply chain.

Key locally based companies in the advanced engineering and manufacturing sectors represent a wide range of activities including aerospace, automotive, fabricated metals and the manufacture of rubber and plastic products. Key companies include: PACCAR, Rolls-Royce, Aircelle (Safran Group), Sanko-Gosei and Senior Plc amongst many others.

Focusing on new and emerging market opportunities, Samlesbury will be a leading centre for world-class research businesses and supply chain manufacturers; developing cutting edge technologies and including capabilities in advanced manufacturing processes.

Nationally, Lancashire is at the forefront of developments in the aerospace industry. The area boasts a dynamic supply chain which employs 30,000 people. The Samlesbury Enterprise Zone provides the opportunity to boost this capacity and will support the creation of up to a further 6,000 high skilled jobs through its development (along with that of the Warton Aviation Enterprise Zone).



World Class Headquarters and Supply Chain Companies



LANCASHIRE ENTERPRISE PARTNERSHIP



Four key development sites have combined into one dynamic, world-class and overarching investment destination - the Lancashire Advanced Manufacturing and Energy Cluster



The Lancashire Enterprise Partnership (LEP) has been successful in securing Enterprise Zone (EZ) status for four separate sites across Lancashire; the largest number of EZ sites awarded to a single LEP.

These sites are at Samlesbury and Warton which are adjacent to BAE Systems’ operations, Blackpool Airport and Hillhouse in Wyre.

The four EZ sites have a strong and complementary industrial focus, building on Lancashire’s national and international strengths in the aerospace, advanced engineering and manufacturing, energy and chemicals industries; and collectively will help to create over 10,000 highly productive high value jobs and an economic and investor offer of truly Northern Powerhouse significance.



Sector focus:
Advanced Manufacturing & Engineering

The UK’s newest Advanced Engineering and Manufacturing site immediately adjacent to a manufacturing centre for BAE Systems, one of the world’s most advanced, technology-led defence, aerospace and security solutions companies.

Sector focus:
Aviation, Energy & Advanced Manufacturing

Blackpool Airport offers bespoke aviation solutions and other commercial airside activities including helicopter and private flights, and the flagship Lancashire Energy HQ will act as a training base for the national energy sector.

Sector focus:
Energy, Chemicals & Polymers

Hillhouse Technology Enterprise Zone offers full COMAH status and provides facilities for the chemical sector on an existing, internationally recognised business park.

Sector focus:
Advanced Manufacturing & Engineering

The site offers opportunities for companies to locate alongside BAE Systems’ Military Air and Information Division, which has developed some of the most advanced engineering and manufacturing capability anywhere in the world.

KEY CONTACTS



www.lancashirelep.co.uk

Kathryn Molloy

T +44 (0)1772 538790
M 07790 883 279
E kathryn.molloy@lancashire.gov.uk



www.lancashire.gov.uk

Andy Walker

T +44 (0)1772 535 629
M 07896 132 251
E andy.walker@lancashire.gov.uk



www.baesystems.com

BAE Systems

T +44 (0)1772 852714
E maicommunications@baesystems.com

Development & Leasing Advisors



Andy Delaney

T +44 (0)151 433 0352
M 07920 532 255
E andy.delaney@colliers.com

Guy Gilfillan

T +44 (0)113 200 1820
M 07885 033 433
E guy.gilfillan@colliers.com

John Sullivan

T +44 (0)161 831 3305
M 07702 908353
E john.sullivan2@colliers.com

www.samlesburyaerospaceez.com

Misrepresentation Act 1967. Unfair Contract Terms Act 1977 The Property Misdescriptions Act 1991. These particulars are issued without any responsibility on the part of the agent and are not to be construed as containing any representation or fact upon which any person is entitled to rely. Neither the agent nor any person in their employ has any authority to make or give any representation or warranty whatsoever in relation to the property.
May 2018. RB&Co 0161 833 0555. www.richardbarber.co.uk



